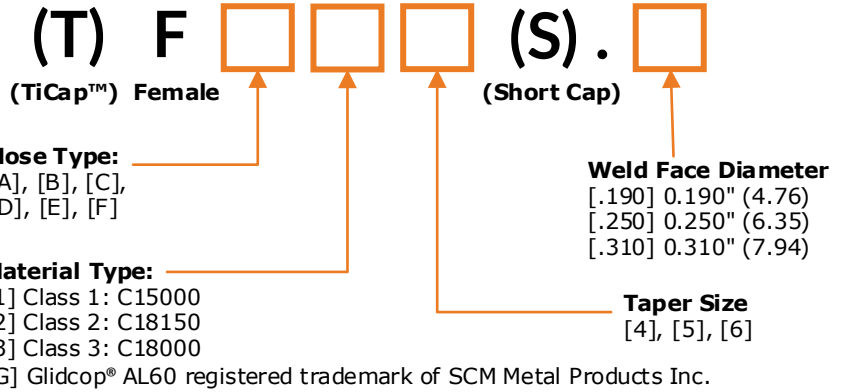
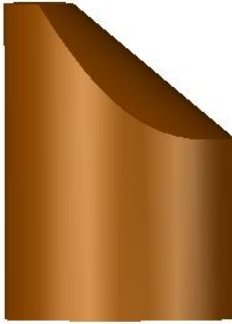
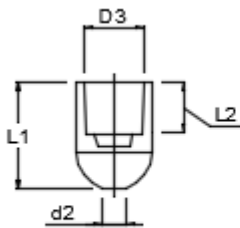


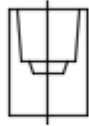
Key to Part Number Coding



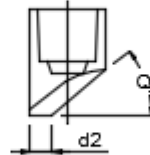
A - Pointed



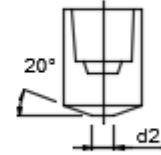
B - Dome



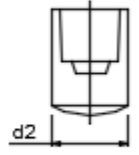
C - Flat



D - Offset



E - Truncated



F - Radius

Taper Size For All Noses	Major Diameter [D1]	Dimensions			
		Overall Length [L1]		Taper Diameter [D3]	Taper Length [L2]
		Standard Caps	Short Caps		
4	0.512 (13.00)	0.840 (21.34)	0.590 (14.99)	0.394 (10.01)	0.320 (8.13)
5	0.625 (15.88)	0.880 (22.23)	0.630 (16.00)	0.4946 (12.56)	0.380 (9.53)
6	0.750 (19.05)	1 (25.40)	0.750 (19.05)	0.625 (15.88)	0.470 (11.94)

Standard Caps

Short Caps do not have a waterhole

Short Caps

Class 2	Weld Face Diameter [d2]	Offset Angle [Q]
FA24	0.190 (4.76)	
FB24	0.190 (4.76)	
FC24	----	
FD24	0.190 (4.76)	40°
FE24	0.190 (4.76)	
FF24	2 (50.80) sphere rad.	
FA25	0.250 (6.35)	
FB25	0.190 (4.76)	
FC25	----	
FD25	0.250 (6.35)	40°
FE25	0.250 (6.35)	
FF25	2 (50.80) sphere rad.	
FA26	0.310 (7.94)	
FB26	0.190 (4.76)	
FC26	----	
FD26	0.310 (7.94)	45°
FE26	0.310 (7.94)	
FF26	2 (50.80) sphere rad.	

Examples:

TFA25:

TiC coated, female, A nose, class 2, size 5 taper, 0.250 (6.35) weld face

FB14.190:

Female, B nose, class 1, size 4 taper, 0.190 (4.76) weld face

FDG6S:

Female, D nose, AL60, size 6 taper, short cap, 0.310 (7.94) weld face

Class 2	Weld Face Diameter [d2]	Offset Angle [Q]
FA24S	0.250 (6.35)	
FB24S	0.190 (4.76)	
FC24S	----	
FD24S	0.190 (4.76)	40°
FE24S	0.190 (4.76)	
FF24S	2 (50.80) sphere rad.	
FA25S	0.250 (6.35)	
FB25S	0.190 (4.76)	
FC25S	----	
FD25S	0.250 (6.35)	40°
FE25S	0.250 (6.35)	
FF25S	2 (50.80) sphere rad.	
FA26S	0.310 (7.94)	
FB26S	0.190 (4.76)	
FC26S	----	
FD26S	0.310 (7.94)	40°
FE26S	0.310 (7.94)	
FF26S	2 (50.80) sphere rad.	

Key to Part Number Coding

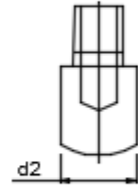
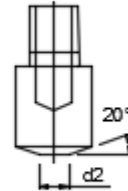
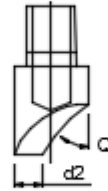
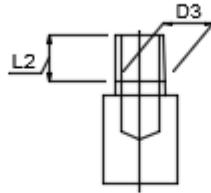
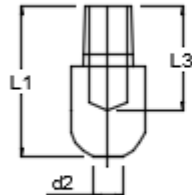
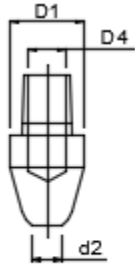


Nose Type:
[A], [B], [C],
[D], [E], [F]

Material Type:
[1] Class 1: C15000
[2] Class 2: C18150
[3] Class 3: C18000
[G] Glidcop® AL60 registered trademark of SCM Metal Products Inc.

Weld Face Diameter
[.190] 0.190" (4.76)
[.250] 0.250" (6.35)
[.310] 0.310" (7.94)

Taper Size
[4], [5], [6], [7]



A - Pointed

B - Dome

C - Flat

D - Offset

E - Truncated

F - Radius

Taper Size For All Noses	Dimensions					
	Major Diameter [D1]	Overall Length [L1]	Taper Diameter [D3]	Taper Length [L2]	Water Hole Diameter [D4]	Water Hole Depth [L3]
4	0.512 (13.00)	1.125 (28.58)	0.375 (9.53)	0.285 (7.237)	0.280 (7.14)	0.625 (15.88)
5	0.625 (15.88)	1.250 (41.15)	0.415 (10.54)	0.390 (9.906)	0.310 (7.94)	0.875 (22.23)
6	0.750 (19.05)	1.625 (41.28)	0.501 (12.73)	0.500 (12.70)	0.380 (9.53)	1 (25.40)
7	0.875 (22.23)	1.625 (41.28)	0.613 (15.57)	0.500 (12.70)	0.500 (12.70)	1 (25.40)

Sizes 4 and 5

Class 2	Weld Face Diameter [d2]	Offset Angle [Q]
MA24	0.190 (4.76)	
MB24	0.190 (4.76)	
MC24	----	
MD24	0.190 (4.76)	40°
ME24	0.190 (4.76)	
MF24	2 (50.80) sphere rad.	
MA25	0.250 (6.35)	
MB25	0.190 (4.76)	
MC25	----	
MD25	0.250 (6.35)	40°
ME25	0.250 (6.35)	
MF25	2 (50.80) sphere rad.	

Sizes 6 and 7

Class 2	Weld Face Diameter [d2]	Offset Angle [Q]
MA26	0.310 (7.94)	
MB26	0.190 (4.76)	
MC26	----	
MD26	0.310 (7.94)	45°
ME26	0.310 (7.94)	
MF26	4 (101.60) sphere rad.	
MA27	0.310 (7.94)	
MB27	0.250 (6.35)	
MC27	----	
MD27	0.310 (7.94)	45°
ME27	0.310 (7.94)	
MF27	6 (152.40) sphere rad.	

TMB24:

TiC coated, male, B nose, class 2, size 4 taper, 0.190 (4.76) weld face

Examples:

ME36.250:

Male, E nose, class 3, size 6 taper, 0.250 (6.35) weld face

MC17:

Male, C nose, class 1, size 7 taper