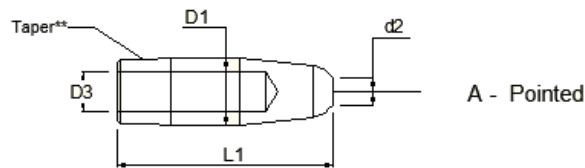
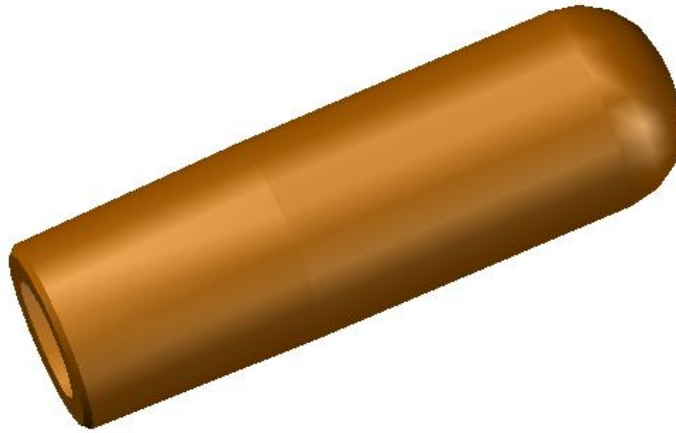
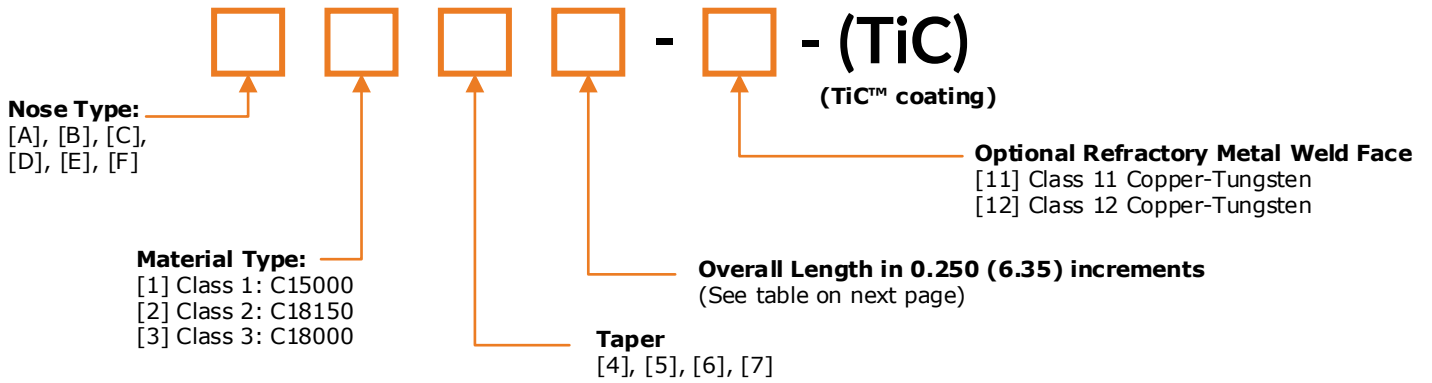


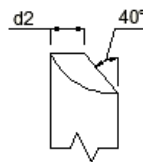
Key to Part Number Coding



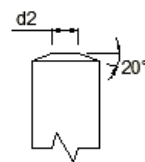
B - Dome



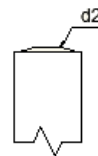
C - Flat



D - Offset



E - Truncated



F - Radius

Taper** (insert any nose style)	Overall Length (L1) (longer lengths available)	Major Diameter (D1)	Water Hole Diameter (D3)	Weld Face (d2)	
				A, B, D, E Noses	F Nose
RWMA Size 4	-----	0.500 (12.70)	0.280 (7.14)	0.190 (4.76)	2 (50.80) radius
_2405	1.25 (31.75)	^	^	^	^
_2406	1.50 (38.10)	^	^	^	^
_2407	1.75 (44.45)	^	^	^	^
_2408	2.00 (50.80)	^	^	^	^
RWMA Size 5	-----	0.625 (15.88)	0.380 (9.53)	0.250 (6.35)	2 (50.80) radius
_2505	1.25 (31.75)	^	^	^	^
_2506	1.50 (38.10)	^	^	^	^
_2507	1.75 (44.45)	^	^	^	^
_2508	2.00 (50.80)	^	^	^	^
RWMA Size 6	-----	0.750 (19.05)	0.440 (11.11)	0.280 (7.14)	4 (101.60) radius
_2605	1.25 (31.75)	^	^	^	^
_2606	1.50 (38.10)	^	^	^	^
_2607	1.75 (44.45)	^	^	^	^
_2608	2.00 (50.80)	^	^	^	^
RWMA Size 7	-----	0.875 (22.23)	0.500 (12.70)	0.310 (7.94)	6 (152.40) radius
_2705	1.25 (31.75)	^	^	^	^
_2706	1.50 (38.10)	^	^	^	^
_2707	1.75 (44.45)	^	^	^	^
_2708	2.00 (50.80)	^	^	^	^

Wherever possible the **Water Hole Depth** is 0.500 (12.70) from weld face

Examples:

A2508-TiC:

A nose, class 2, size 5 taper, 2 (50.80) overall length, 0.250 (6.35) weld face

F1716:

F nose, class 1, size 7 taper, 4 (101.60) overall length, 6 (152.40) radius

C2406-11:

C nose, class 2, size 4 taper, 1.5 (38.10) overall length, class 11 tungsten-copper weld face