



Key to Part Number Coding

ISO- X -(TiC)

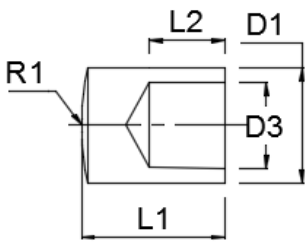
ISO 5821
1/10 taper

(TiCap™)

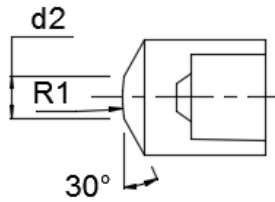
Nose Type:
[A], [B], [C], [D],
[E], [F], [F1], [G]

Cap Width (mm)
[13], [16], [20]

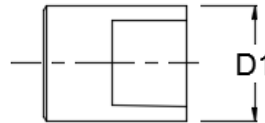
Cap Length (mm)
[18], [20], [22]



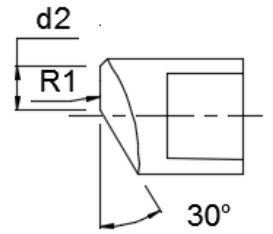
TYPE A0



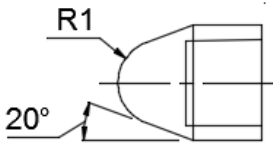
TYPE B0



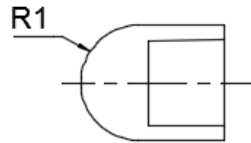
TYPE C0



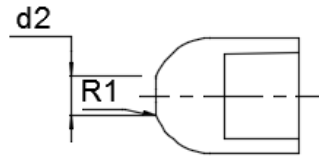
TYPE D0



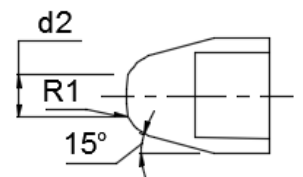
TYPE E0



TYPE F0



TYPE F1



TYPE G0

Note: Default material for ISO (1/10) taper caps is class 2 (C18150)

Cap Size	Nose	Overall Diameter [D1]	Overall Length [L1]	Taper Diameter [D3]	Taper Length [L2]
13	A, B, C, D, E, F, F1, G	13mm	18mm	10mm	8.5mm
16	A, B, C, D, E, F, F1, G	16mm	20mm	12mm	10.5mm
20	A, B, C, D, E, F, F1, G	20mm	22mm	15mm	12mm

Cap	Weld Face Diameter [d2]	Radius [R1]
ISO-A13X18	----	30mm sphere rad
ISO-A16X20	----	40mm sphere rad
ISO-A20X22	----	50mm sphere rad
ISO-B13X18	5mm	32mm sphere rad
ISO-B16X20	6mm	40mm sphere rad
ISO-B20X22	8mm	50mm sphere rad
ISO-C13X18	----	----
ISO-C16X20	----	----
ISO-C20X22	----	----
ISO-D13X18	5mm	32mm sphere rad
ISO-D16X20	6mm	40mm sphere rad
ISO-D20X22	8mm	50mm sphere rad
ISO-E13X18	----	5mm sphere rad
ISO-E16X20	----	6mm sphere rad
ISO-E20X22	----	8mm sphere rad
ISO-F13X18	----	6.5mm sphere rad
ISO-F16X20	----	8mm sphere rad
ISO-F20X22	----	10mm sphere rad
ISO-F1-13X18	5mm	50mm sphere rad
ISO-F1-16X20	5.5mm	50mm sphere rad
ISO-F1-20X22	6mm	50mm sphere rad
ISO-G13X18	5mm	32mm sphere rad
ISO-G16X20	6mm	40mm sphere rad
ISO-G20X22	8mm	50mm sphere rad

Examples:

ISO-D16X20:

1/10 taper, D nose, 16mm diameter, 20mm length, 6mm weld face

ISO-C20X22-TiC:

1/10 taper, C nose, 20mm diameter, 22mm length, TiC coated

ISO-F1-16X20-7:

1/10 taper, F1 nose, 16mm diameter, 20mm length, 7mm weld face