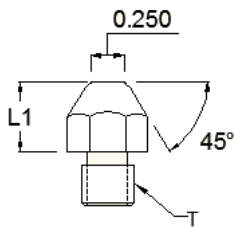
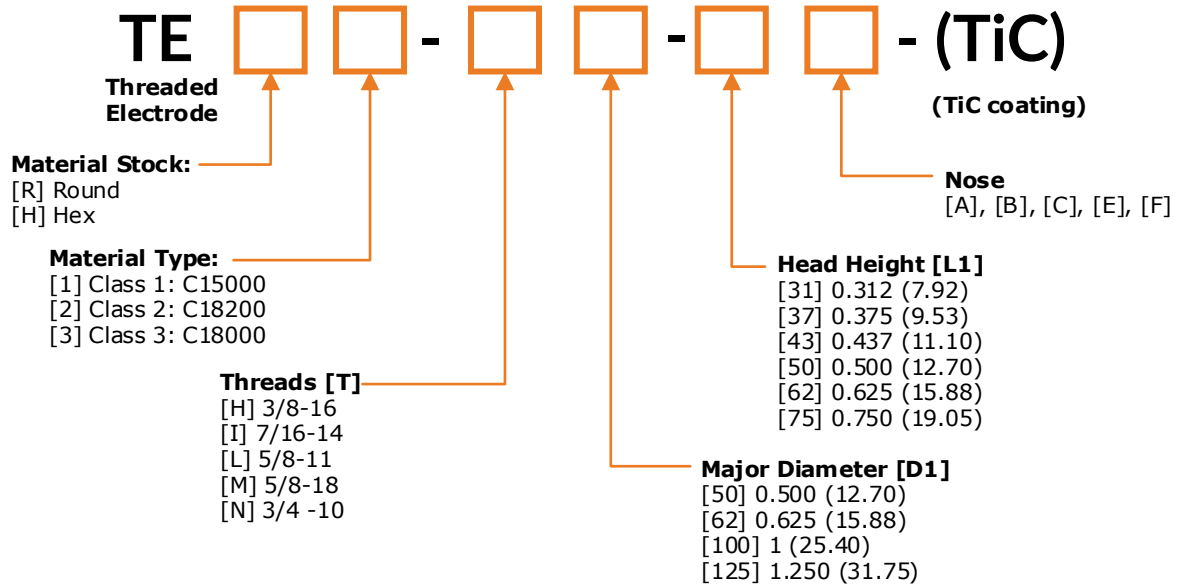
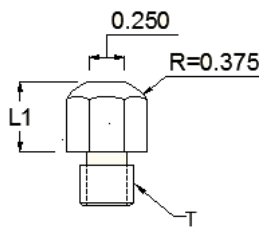


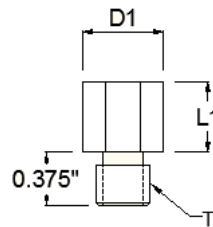
Key to Part Number Coding



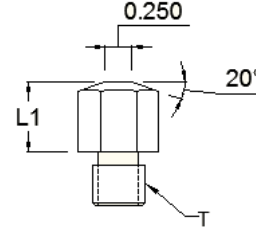
A - Pointed



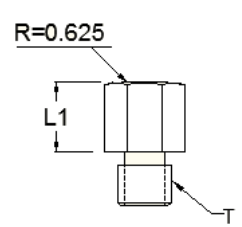
B - Dome



C - Flat



E - Truncated



F- Radius

Examples:

TER2-N62-31A-TiC

Threaded Electrode, Round, class 2, 3/4-10 thread, 0.625(15.88) diameter, 0.312 (7.92) head height, A nose, 0.250 (6.35) weld face, TiC coated

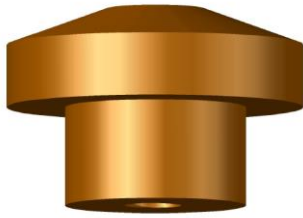
TEH3-H50-62C:

Threaded Electrode, Hex, class 3, 3/8-16 thread, 0.500 (12.70) diameter, 0.625 (15.88) head height, C nose

TEH2-L100-43B:

Threaded Electrode, Hex, class 2, 5/8-11 thread, 1.00 (25.4) diameter, 0.437 (11.10) head height, B nose, 0.250 (6.35) weld face

Female Threaded Button Electrodes



Key to Part Number Coding

BFT - (TiC)

Button Female Threaded

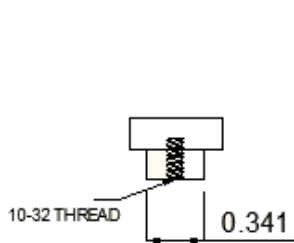
TiC coating

Material Type:

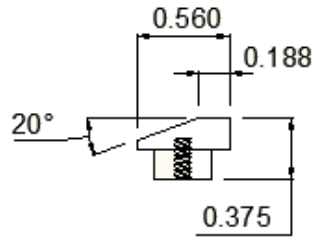
- [1] Class 1: C15000
- [2] Class 2: C18150
- [3] Class 3: C18000

Nose Type:

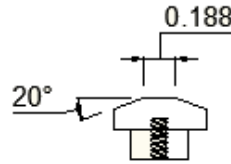
- [C], [D], [E], [F]



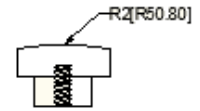
C - Flat



D - Offset



E - Truncated



F - Radius

Examples:

BFT2C

Female Threaded Button Electrode, class 2, C nose

BFT1E-TiC

Female Threaded Button Electrode, class 1, E nose, TiC coated

Tapered Button Electrodes



Key to Part Number Coding

BTE - (TiC)

Button Tapered Electrode

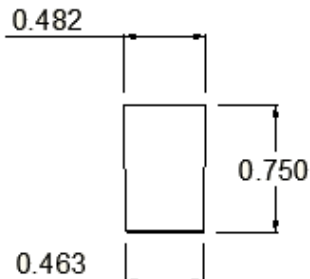
TiC coating

Material Type:

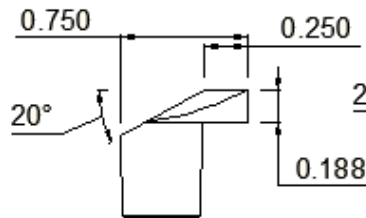
- [1] Class 1: C15000
- [2] Class 2: C18150
- [3] Class 3: C18000

Nose Type:

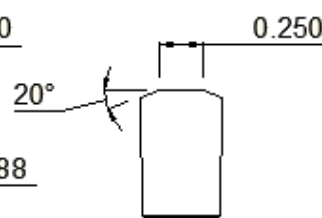
- [C], [D], [E], [F]



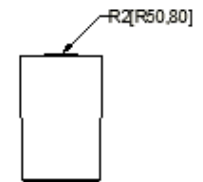
C - Flat



D - Offset



E - Truncated



F - Radius

Examples:

BTE3F

Tapered Button Electrode, class 3, F nose

BTE2D-TiC

Tapered Button Electrode, class 2, D nose, TiC coated